



Priority Impact Research Initiatives

Fostering Biodiversity Across a Changing Landscape

Communicable Diseases Transmitted from Animals to Humans (Zoonotic Diseases)

Filipino Diaspora and the Homeland: Leaving, Staying Behind, and In-Between

History and the Sustainable City: How Cities Have Developed and How They Will Develop

From Directive to Practice: How Teaching and Learning Happens Throughout the Philippines in Response to CMOs, DMs, and DOs

PIRI Theme	Research Topics	Collaborators	SDG
Fostering Biodiversity Across a Changing Landscape	Biodiversity flora and fauna in FEU campuses	IAS-Bio	15
	Molecular and genetic diversity database of different coastal seaweeds in Luzon and the efficiency of its carbohydrate polymer to act as a heavy metal chelator.	IAS-Math, IAS-Bio	14
Communicable Diseases Transmitted from Animals to Humans (Zoonotic Diseases)	Molecular docking study of protein inhibitors from medicinal plants to counter whooping cough protein toxin.	IAS-Math, IAS-Bio, IHSN	3, 15

PIRI Theme	Research Topics	Collaborators	SDG
Filipino Diaspora and the Homeland: Leaving, Staying Behind, and In-Between	Communication Barriers	IAS-Comm, IAS-LLS	3, 11
	Narratives of Filipina Migrant Workers	IAS-IDS, IAS-LLS	5, 8, 10
	Assessment of Policies and Treaties Regarding Migrant Workers	IAS-IS, IAS-Pol Sci	16
	Mental Health and Family Dynamics	IAS-Psych, IAS-Pol Sci, IAS-Comm, IHSN	3

PIRI Theme	Research Topics	Collaborators	SDG
Filipino Diaspora and the Homeland: Leaving, Staying Behind, and In-Between	A Community-Based Inventory on the Mental Health Services and an Analysis on Mental Health Literacy, Psychological Well-Being, and Help-Seeking of Filipinos in the National Capital Region	IAS-Psych, IAS-Comm, IHSN	3, 11
	The Moderated Mediating Role of Wellbeing on Prison Climate and Growth Mindset and Flourishing in Predicting Hope among Persons Deprived of Liberty in Manila City Jail Female Dormitory (MCJFD)	IAS-Psych, IAS-Pol Sci, IHSN	3, 16

PIRI Theme	Research Topics	Collaborators	SDG
Filipino Diaspora and the Homeland: Leaving, Staying Behind, and In-Between	Continuing care in COVID-19 Outbreak: A global survey of New expectant and bereaved parent experiences or COCOON	IAS-Psych, IHSN	3
	A Study of Overseas Filipino Workers' Children's Career Aspirations and Expectations	IAS-Pol Sci, IAS-LLS, IAS-IDS, IE	4, 8, 10
History and the Sustainable City: How Cities Have Developed	Colonial Sugar Heritage Waterways of Western Visayas	IAS-IDS	11

PIRI Theme	Research Topics	Collaborators	SDG
	The National Museum of the Philippines: An Institution's History and the Nation's Identity Formation	IAS-LLS	11
	Navigating the Challenges of Local Economic Development (LED) Programs in Small and Developing Rural Towns: The Cases of 4th and 5th Municipalities in the Province of Laguna	IAS-Pol Sci	11, 16

PIRI Theme	Research Topics	Collaborators	SDG
From Directive to Practice: How Teaching and Learning Happens throughout the Philippines in response to CMOs, DMs, and DOs	Development and Evaluation: Training Modules for Language and Literature in the Division of City Schools in Caloocan	IAS-LLS, IE	4

Fostering Biodiversity Across a Changing Landscape



Philippine Biodiversity

- The Philippines is one of 17 megadiverse countries.
- It is also one of 36 biodiversity hotspots in the world.
 - Hotspots are irreplaceable areas with high endemism and threats. Combined, these represent just 2.5% of Earth's land surface but supporting ~50% of the global endemic flora, ~43% of vertebrate fauna, and 35% of ecosystem services humans require.
- As various threats imperil native plants and animals, human sustainability may similarly be compromised due to a dependency on natural resources

¹Mittermeier & Mittermeier. 1997. Megadiversity: Earth's Biologically Wealthiest Nations. CEMEX.

²Myers et al. 2000. Biodiversity hotspots for conservation priorities. Nature 403:853-858.

³CEPF



Threatened Philippine Biodiversity

- The number of threatened species is increasing over time, many of which are endemic to the Philippines.*DAO refers to a DENR Administrative Order

FAUNA	DAO 2004-15	DAO 2019-09	
	Vertebrates	Vertebrates	Invertebrates
CR	24	47	13
EN	28	55	6
VU	84	119	321
OTS	9	101	444
TOTAL	145	322	784

FLORA	DAO 2007-01	DAO 2017-11	~2024
CR	99	179	269
EN	187	254	304
VU	176	406	435
OTS	64	145	229
TOTAL	526	984	1237

Preliminary list of topics

Dimensions	Programs	Research	(Potential) Collaborators	2024 Projects
FAUNA	Systematics of notable taxa	Focal taxa: Zingiberaceae	UST, Muséum National d'Histoire Naturelle	Docot, PhD study on Alpinia
		Focal taxa: Asclepiadaceae	DLSU	Arshed, PhD study on Dischidia
		Focal taxa: Macroalgae	Sorsogon State University	
	Floristic assessments	Floristic surveys in urban green spaces	all FEU campuses, DENR-NCR	
		Floristic surveys in natural green spaces	Philippine National Herbarium, Northwestern University -Laoag, Ilocos Norte	Yap, SCOPE Program: 5-ha plot establishment
		Carbon stock monitoring	Northwestern University - Laoag, Ilocos Norte	Yap, SCOPE Program: 5-ha plot establishment
	Long term ecological studies	Growth, recruitment, and mortality of native flora	Northwestern University - Laoag, Ilocos Norte	Yap, SCOPE Program: seedling plot monitoring
		Phenological monitoring	Northwestern University - Laoag, Ilocos Norte	
		Environmental conditions as covariates	all FEU campuses	
		Seaweed ecology and ethnobiological use		MS Thesis: (1) by TA/RA seaweed ecology



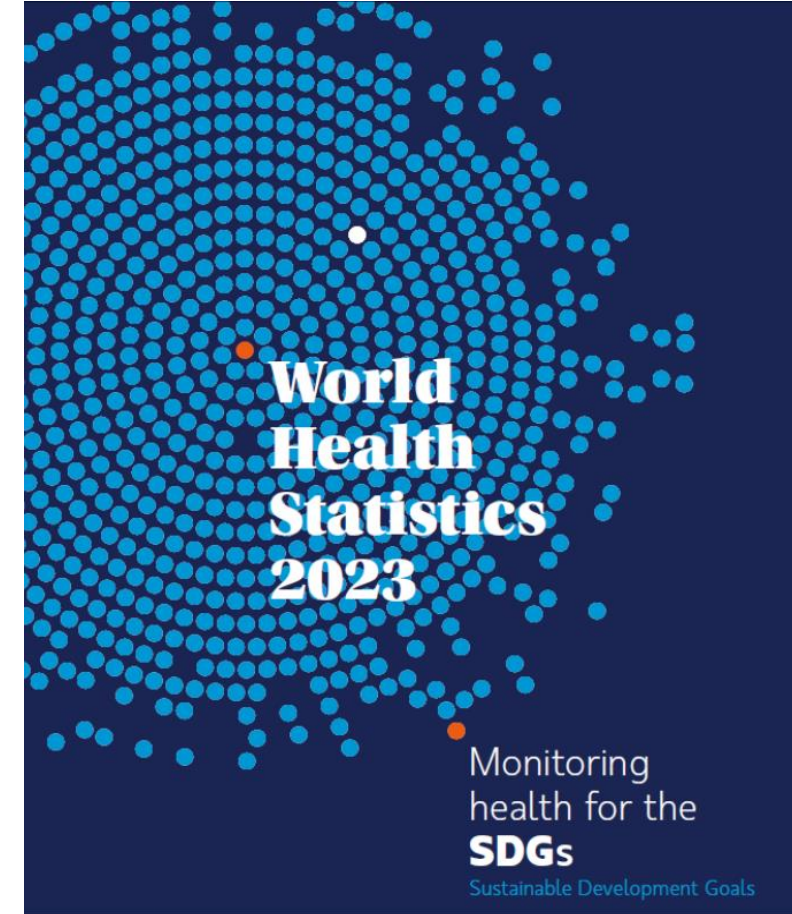
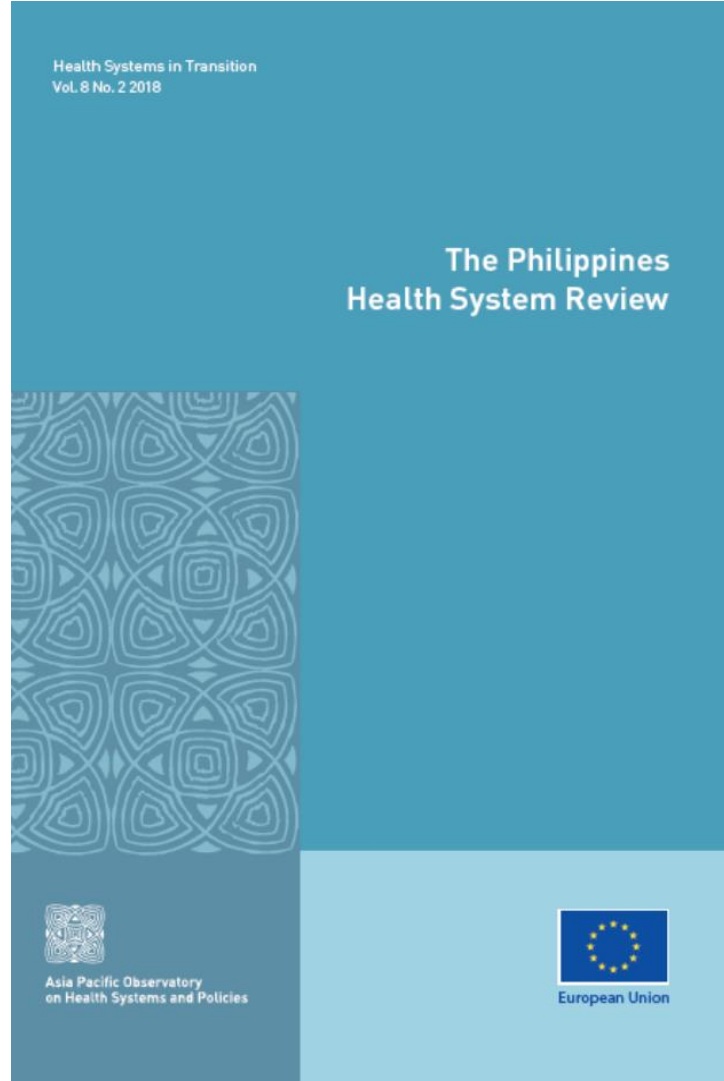
Preliminary list of topics

Dimensions	Programs	Research	(Potential) Collaborators	2024 Projects
CHANGING LANDSCAPES	Climate change science and adaptive measures	Communicating climate change science	IAS-Comm	Docot, PhD study on Alpinia
		Carbon offsetting	all FEU campuses	Arshed, PhD study on Dischidia
	Conservation actions	In-situ conservation (population counts, genetic diversity assessment, IEC)	DENR	
		Ex-situ conservation via the FEU Botanic Garden	FEU Cavite	
		Greening with native species	all FEU campuses	

3 GOOD HEALTH AND WELL-BEING

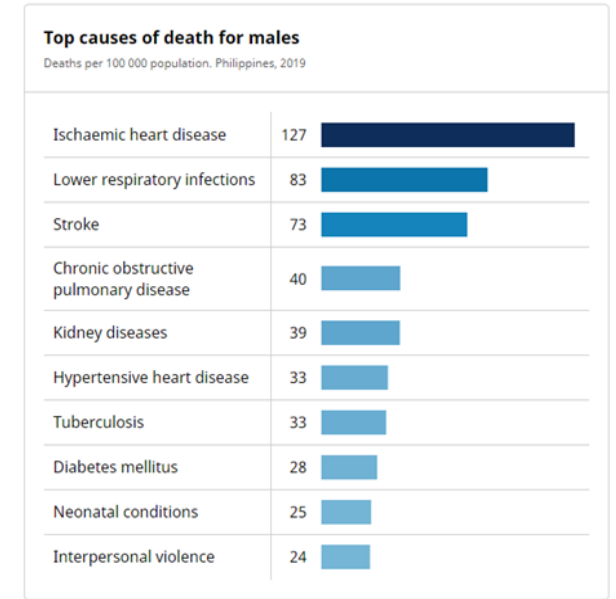
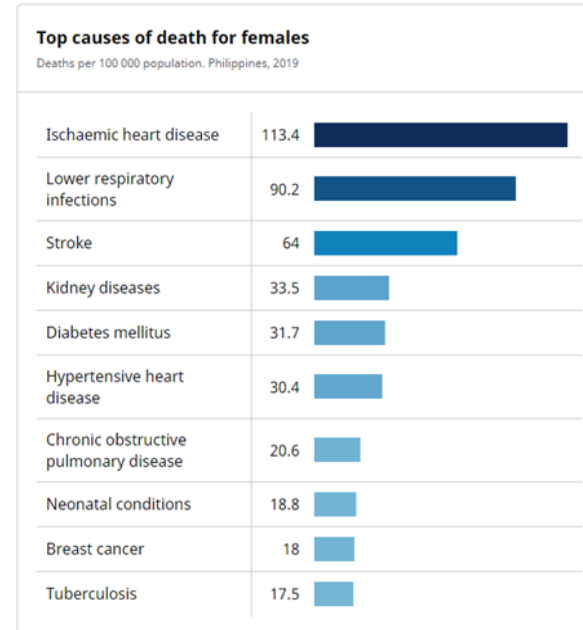


Healing Horizons: Innovative Solutions for Healthcare Challenges in the Philippines



Philippine Situation

- Triple **burden of diseases**
 - Increasing health impact of globalization and escalating climate change (PH is 1st in terms of exposure to disaster risks!).
 - Changes in lifestyle and increasing risk factors related to diet, tobacco smoke and high systolic blood pressure.
 - Continue to suffer from preventable diseases (HIV, TB, VPDs).
- Health system inefficiencies and **health inequities**.
- Serious **information asymmetry** between providers (hospitals, doctors) and patients as well as payers/funders and patients.



**Lack of health facilities healthcare personnel
adoption of technology**

Dimension	Programs	Research	Collaborators
Health Inequity	Patient-guardian caregiving	Effectiveness on caregiving provided by family members	IHSN-Nursing, IE-Grad, IAS-Psych
		Content development of short courses on caregiving	IHSN-Nursing, IE-Grad
		Mental health issues of patient-guardian caregiver	IHSN-Nursing, IAS-Psych
	Upskilling of healthcare personnel	Skill and knowledge evaluation of barangay health workers	IHSN-Nursing, IHSN-MedTech IHSN-Pharmacy, IE-Grad
		Evaluation of new teaching modalities on training community health workers	IHSN-Nursing, IE-Grad, IAS-Comm
	Greater access to therapeutics	Evaluation of common herbal medicines	IHSN-Pharmacy, IHSN-MedTech, IHSN-Nursing, IABF-BA
		Use of chiropractic manipulation in communities	IHSN-Nursing, CICS
		Repurposing of approved drugs	IHSN-Pharmacy, IHSN MedTech

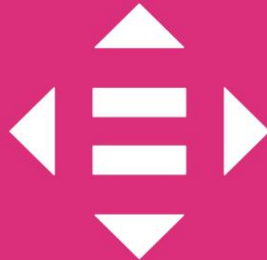
Dimension	Programs	Research	Collaborators
Burden of Disease and Information Asymmetry	Disease Surveillance and Health Education	Evaluation of risks associated with non-communicable diseases <ul style="list-style-type: none"> Nutrition Lifestyle 	IHSN-Nutrition, IHSN-Nursing, IHSN-Medtech, NSTP
		Detection of zoonoses among high-risk populations	IHSN-MedTech, IAS-Biology
		Antimicrobial resistance surveillance	IHSN-MedTech, IHSN-Pharmacy, IHSN-Nursing, GSC
		Development of new diagnostic tools for high-incidence diseases	IHSN-MedTech, IAS-Biology, IABF-BA
		Climate change and emergence and re-emergence of infectious diseases	IHSN-MedTech, IHSN-Nursing ITHM-Tourism
		Evaluation of vaccination strategies in a community (e.g. vaccine acceptance)	IHSN-Nursing, IHSN-MedTech, IAS-Comm, IAS-PolSci, IE-Grad

Migration & Diaspora

8 DECENT WORK AND
ECONOMIC GROWTH



10 REDUCED
INEQUALITIES



16 PEACE, JUSTICE
AND STRONG
INSTITUTIONS



17 PARTNERSHIPS
FOR THE GOALS



Background

- In 2022, there were 1.96 million OFWs, up from 1.83 million in 2021. 57.8% were women (1.13 million) and 42.2% were men (828 thousand).*
- OFW remittances totaled 197 billion pesos in 2022, primarily sent through banks and money transfer services.

**Based on the 2022 Survey on Overseas Filipinos by the Philippine Statistics Authority*



Background

- OFW remittances significantly impact our economy.
- According to the ILO, migrant workers experience discrimination, racism, unfair recruitment, and migration status restrictions, leading to labor and wage abuses. Domestic workers abroad often face:
 1. Low-income wages
 2. Gender disparity and discrimination
 3. Limited access to health services
 4. Abuse and exploitation
 5. Insufficient government support for repatriation, especially for distressed workers



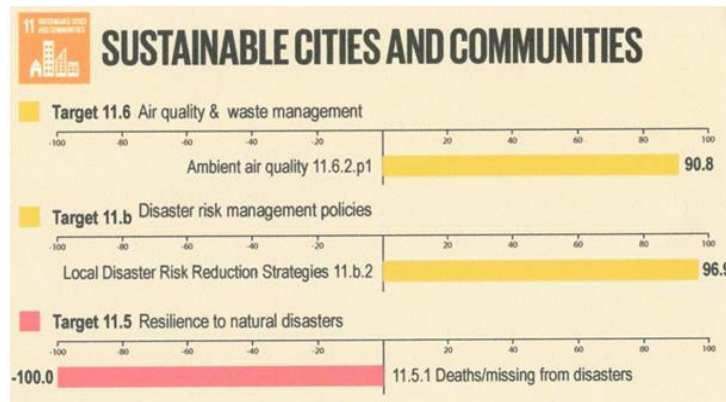
Research Fields	Collaborators
Lived experiences of migrant workers abroad in time of neoliberal globalization - including domestic work, healthcare, and maritime industries.	IAS, ITHM, IHSN, IE
Socioeconomic impacts of migration on sending and receiving countries.	IAS
Filipino migrant workers and their challenge to cultural adaptation and identity formation.	IARFA, ITHM, IE
Exploring transnational families and the impact of migration on their dynamics and relationship as a modern-day Filipino family. (e.g. children being left behind, remittance and its role in sustaining the family's needs)	IAS
Issues faced by Filipina migrant workers about gender inequality and racial discrimination (e.g. International Division of Reproductive Labor by Parrenas, feminization of migration)	IAS, IHSN, IE
Filipino heritage abroad (Bridging Philippines and the global Filipino diaspora)	IAS, ITHM
Understanding immigration policies and regulations related to labor rights of Filipino migrant workers and how it affects their living conditions abroad. (e.g. human trafficking, issues on deportation, repatriation, revisiting of MOU and/or bilateral task between countries)	IAS
Situation of Filipinos abroad in times of natural disasters and calamities, wars, and displacement. (e.g. Taiwan quake, Israel-Iran war)	IAS, IHSN
Social movements and globalization (e.g. Case of Mary Jane Veloso and its impact on delaying the death penalty punishment imposed by the Indonesian government)	IAS

11 SUSTAINABLE CITIES AND COMMUNITIES



**Make cities
and human settlements
inclusive, safe, resilient,
and sustainable**

MAKE CITIES AND HUMAN SETTLEMENTS INCLUSIVE, SAFE, RESILIENT, AND SUSTAINABLE



[Infographics | Philippine Statistics Authority | Republic of the Philippines \(psa.gov.ph\)](#)

The world's population is constantly **increasing**. To accommodate everyone, we need to build modern, sustainable cities. For all of us to survive and prosper, we need new, intelligent urban planning that creates safe, affordable and resilient cities with green and culturally inspiring living conditions.

TARGETS

Provide universal access to safe, inclusive, and accessible, green and public spaces, in particular for women and children, older persons and persons with disabilities.

Strengthen efforts to protect and safeguard the world's cultural and natural heritage.

Reduce the adverse per capita environmental impact of cities, including by paying special attention to air quality and municipal and other waste management.

Support positive economic, social and environmental links between urban, peri-urban and rural areas by strengthening national and regional development planning.

Substantially increase the number of cities and human settlements adopting and implementing integrated policies and plans towards inclusion, resource efficiency, mitigation and adaptation to climate change, resilience to disasters, and develop and implement, in line with the Sendai Framework for Disaster Risk Reduction 2015-2030, holistic disaster risk management at all levels.



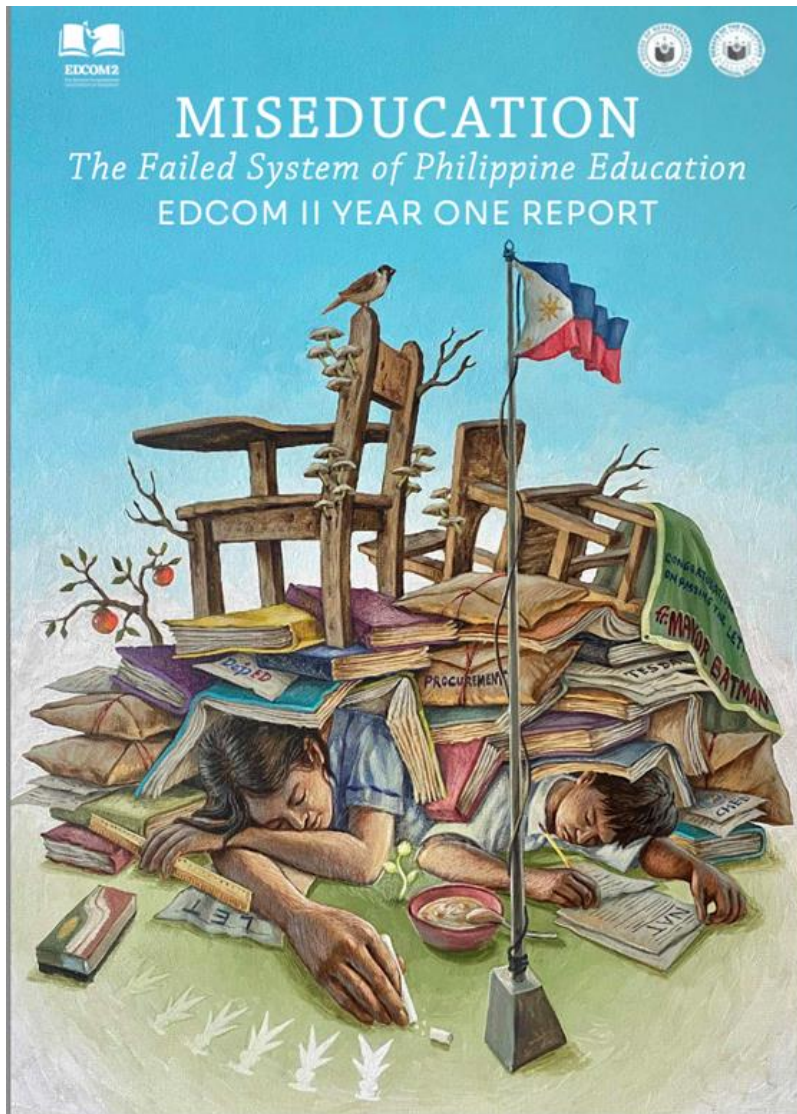
Dimension	Programs	Research	Collaborators
Urban Planning and Infrastructure	Support positive economic, social and environmental links between urban, peri-urban and rural areas by strengthening national and regional development planning.	Research on urban planning, land use, and infrastructure development in Philippine cities	IAS, ITHM, IE, IHSN, IABF
		Data on population growth, land utilization, and existing infrastructure projects	
	Strengthen efforts to protect and safeguard the world's cultural and natural heritage	Cultural Heritage conservation	
Environmental Sustainability	Reduce the adverse per capita environmental impact of cities, including by paying special attention to air quality and municipal and other waste management	Investigate studies on air quality, pollution sources, Cleaner energy sources and waste management practices.	ITHM, IHSN

Dimension	Programs	Research	Collaborators
Resilience and Disaster Preparedness	Resilience measures, early warning systems and disaster risk reduction	Review disaster risk reduction studies	IAS, ITHM, IE, IHSN, IABF
		Vulnerability assessments	
		Sustainable and resilient buildings utilizing local materials	
		Climate change adaptation plans	
Inclusive Communities	Provide universal access to safe, inclusive and accessible, green and public spaces, in particular for women and children, older persons and persons with disabilities.	Social inclusion, community engagement, and equitable access to services	IAS, ITHM, IE, IHSN
		Universal Design	

4 QUALITY EDUCATION



From Directive to Practice: How Teaching and Learning Happens in the Philippines in response to CMOs, DMs, and DOs



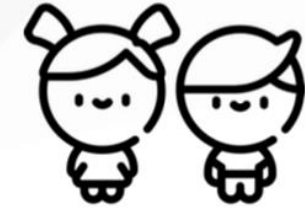
Basis for the Proposed Research Initiatives

- **Early Childhood Care and Development (ECCD)**
 - Priority 4: Governance and Financing of ECCD
- **Basic Education**
 - Priority 5: Learning Resources
 - Priority 6: Measurement of Learning Outcomes
 - Priority 7: Curriculum and Instruction
- **Higher Education**
 - Priority 11: Access to quality Education
 - Priority 16: Alignment of CHED, PRC, and DepEd on Teacher Education and Development
 - Priority 18: In-Service Training and Development, including Teacher Welfare
- **TVET**
 - Priority 20: Industry Involvement and Investment in Upskilling Program

Basis for the Proposed Research Initiatives



Education Governance



Early Childhood Care and Development



Government- Industry-Academia Collaboration



Teacher Quality



Public-Private Complementarity

From Directive to Practice: How Teaching and Learning Happens in the Philippines in response to CMOs, DMs, and DOs

This priority impact research initiative focuses on exploring the implementation, gaps, and impact of educational policies and practices. This includes programs that focus on curricular and instructional reforms, teacher professional development, and school community relations and collaborations, in light of the political, economic, environmental, social, and technological changes. This impact research is deemed important in developing framework and policies, and/or guiding practice, towards curriculum and teaching reforms and innovations.



Dimensions	Programs	Research	Collaborators
Gaps on Educational Policies and Practices	Policy Impact and Reforms Analysis	Educational reforms and policies and its impact on curriculum, student outcomes, quality instruction, and assessment a. DepEd b. CHED c. TVET	All Institutes
Competency Mismatch and Teacher Preparedness	Curriculum Management and Instructional Leadership	Curriculum frameworks and its alignment with national goals (PDP, DOST, PRC) and UN SDGs a. Teacher training curriculum vis-à-vis standards of regulating bodies (PRC, accrediting bodies) b. Teacher training programs and professional development initiatives on classroom instruction c. Assessment of learning resources vis-à-vis student outcomes and quality instruction	IE and CTL
Atomistic Learning Environment	Teaching- Learning Environment and Holistic Learning	Parent and community stakeholders' involvement in promoting student learning, well-being, and fostering community and school partnership a. Laws and policies on child protection and its implementation in basic education b. Conduct of service learning and community extension activities as part of student immersion in rural and urban communities c. Development and analysis of outcomes-based curriculum design aligned with the inputs and requirements of the stakeholders c.1. Development of holistic learners c.2. Responsiveness to 5IR and ASEAN Qualifications Framework	IAS, CES, IRO, AQA